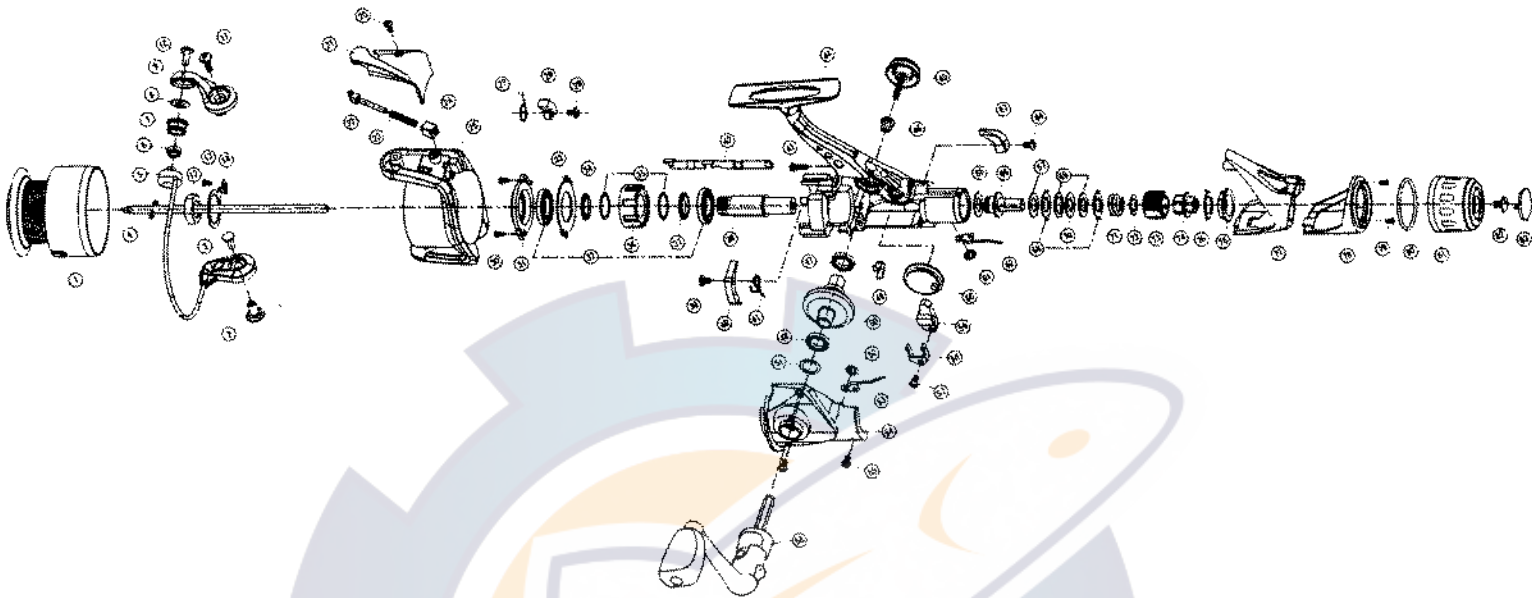


**Daiwa**  
COMMITTED TO TOTAL QUALITY  
**SPINNING REEL**

**CAPRICE 2550**



Key No.	Parts No.	Parts Name	Key No.	Parts No.	Parts Name
1	W38-0031	SPOOL	45	W34-4801	HANDLE SCREW
1	W38-0032	SPOOL (EXTRA)	46	W34-4701	HANDLE COLLAR
2	W34-0201	BAIL HOLDER NUT	47	W34-5301	DRIVE GEAR BUSHING
3	W38-0201	BAIL HOLDER SCREW	48	W34-3601	BALL BEARING D
4	W38-0301	MAIN SHAFT	49	W34-3901	A/R PAWL SPRING A
5	W38-0402	BAIL	50	W38-4801	DRIVE GEAR
6	W38-0551	LINE ROLLER BUSHING	51	W34-3701	DRIVE GEAR WASHER
7	W33-8101	LINE ROLLER	52	W38-5001	CLICK LEAF SPRING RET
8	W33-8201	LINE ROLLER COLLAR	53	W38-5101	CLICK LEAF SPRING A
9	W38-0803	BAIL ARM	54	W38-5203	SIDE COVER
10	W38-0901	LINE ROLLER SCREW	55	W38-5301	SIDE COVER SCREW
11	W33-8401	BAIL ARM SCREW	56	W38-5403	HANDLE
12	W38-1101	ROTOR NUT	57	W38-5501	OSC SLIDER RET PLT SCREW
13	W33-9101	ROTOR NUT HOLD PLT SCREW	58	W38-5601	OSC SLIDER RET
14	W33-9501	ROTOR NUT HOLD PLT	59	W38-5701	OSC SLIDER
20	W38-1901	BAIL SPRING COVER SCREW	60	W34-2701	OSC GEAR
21	W34-0301	BAIL SPRING COVER	61	W38-5001	CLICK LEAF SPRING RET
22	W33-8701	BAIL SPRING SHAFT	62	W38-5901	CLICK LEAF SPRING B
23	W33-8801	BAIL SPRING	63	W34-2401	A/R LEVER
24	W33-8901	BAIL SPRING HOLDER	64	W38-6101	A/R LEVER SCREW
25	W38-2404	ROTOR	65	W38-6201	DRAG METAL WASHER
27	W34-0501	BAIL TRIP LEVER SPRING	66	W38-6301	DRAG METAL A
28	W34-0601	BAIL TRIP LEVER	67	W38-6401	DRAG WASHER A
29	W38-2801	BAIL TRIP LEVER SCREW	68	W38-6501	EARED WASHER
30	W38-2901	BEARING RET SCREW	69	W38-6601	DRAG WASHER B
31	W34-0901	BEARING RET A	70	W38-6701	KEY WASHER
32	W34-1701	BALL BEARING C	71	W38-6801	DRAG COIL SPRING
33	W34-1101	BEARING RET B	72	W38-6901	DRAG SCREW WASHER
34	W34-1201	ROLLER CLUTCH COLLAR	73	W38-7001	DRAG SCREW
35	W34-1501	ROLLER CLUTCH WASHER	74	W38-7101	DRAG METAL B
36	W34-1401	ROLLER CLUTCH	75	W38-7201	DRAG COLLAR
37	W34-1601	BALL BEARING COLLAR B	76	W38-7301	DRAG COVER
38	W38-3703	PINION GEAR	77	W38-7403	REAR COVER A
39	W38-3801	A/R PAWL SCREW	78	W38-7501	REAR COVER B
40	W34-4501	A/R PAWL	79	W38-7601	REAR COVER B SCREW
41	W34-4401	A/R PAWL SPRING B	80	W38-7701	O RING
42	W34-2001	A/R CAM	81	W38-7801	DRAG KNOB
43	W38-4201	REAR COVER A SCREW	82	W38-7901	DRAG METAL SCREW
44	W38-4303	BODY	83	W38-8001	DRAG METAL SCREW CAP